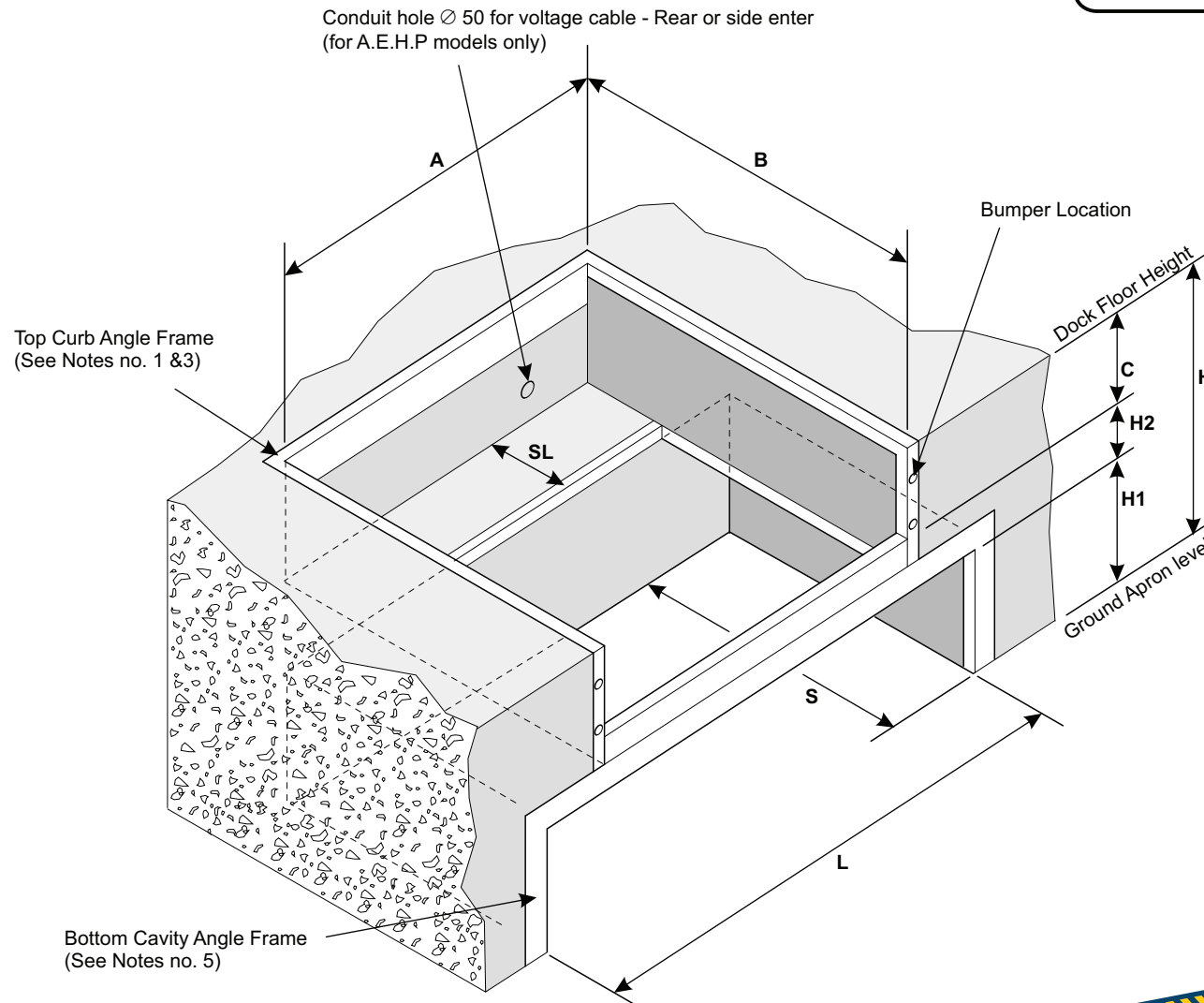


TAIL LIFT CAVITY

Customer _____
 Model _____ Job _____ Order.No. _____
 Power and Control Arrangement _____ Bumper Type _____
 Approved for Construction _____ Date _____



Model	A	B	C
	Width	Length	Depth
STD DL 1830	* 1880mm	2820mm	445mm
DL 2130	2185mm	2820mm	445mm

* Donates model for:
HHP - Hand Hydraulic Pump
EHP - Automatic Electro Hydraulic Power Pack

H = Loading Bay Height, 1350mm

H1 = Height of tail lift space, min.400mm

H2 = Channel depth, 100mm

NOTES:

To be supplied by the contractor:

1. Top Curb Angle Frame - Use 16mm diameter minimum, 80mm below concrete.
2. Curb Angle - Use min 80 x 80 x 6mm (Front 80x100x6mm)
3. Curb Angle - Centre distance 600mm max.
4. Pit must be clear and access be provided for installation.
5. Bottom cavity angle frame. (80x100x6mm or DDL to supply).
6. Spacer Bent Channel.

TAIL LIFT CAVITY UNDER DOCK LEVELER



DDL Equipment Pty Ltd

Reg No: 2005/043409/07

E-Mail: sales@ddl.co.za

Website: www.ddl.co.za

Tel: 011 393 1209

Fax: 011 393 1169

6 Neutron Road, Chloorkop, Kempton Park