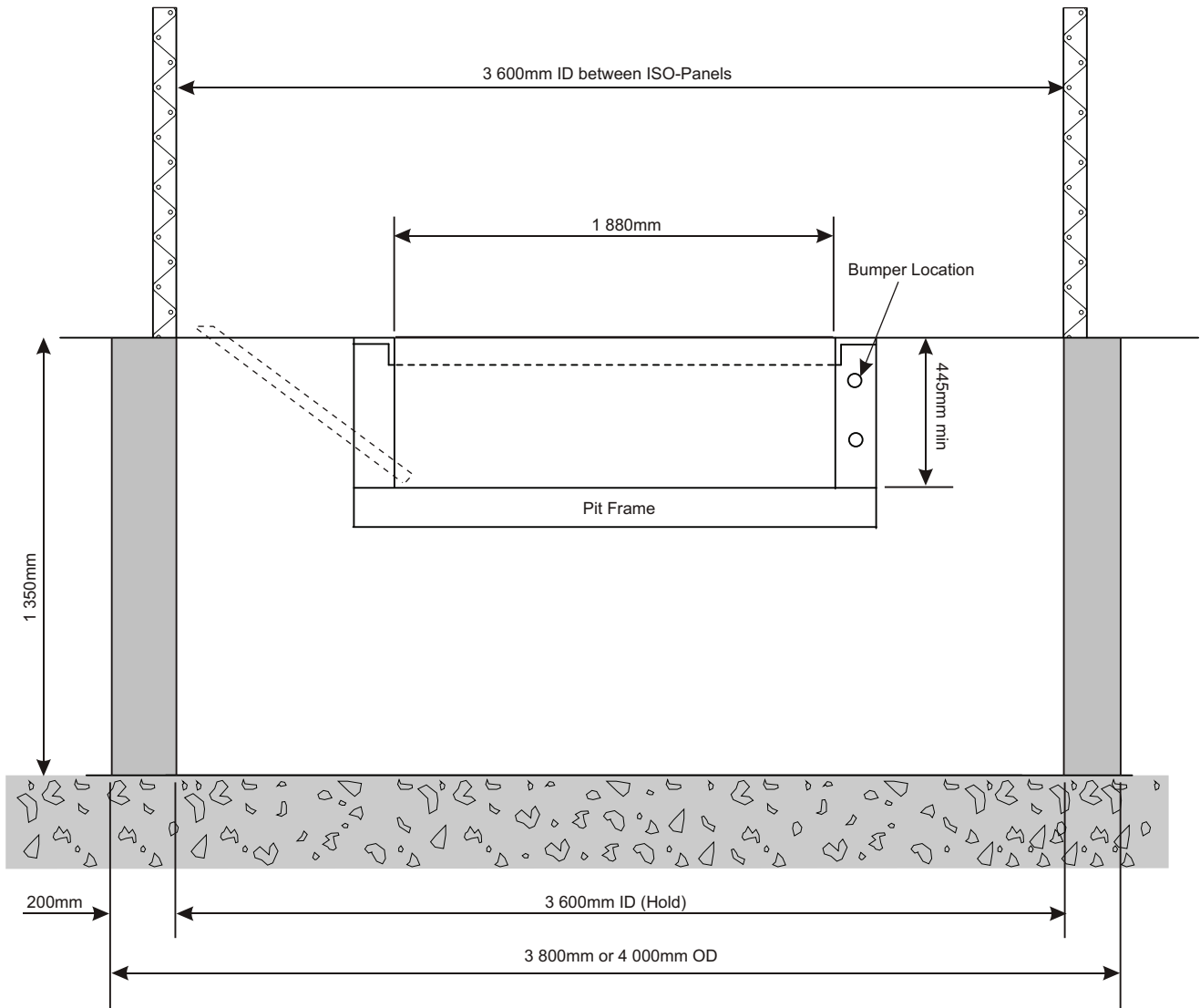


# DOCK CUBICLE

## Concrete Base

### Technical Data

Customer \_\_\_\_\_  
Model \_\_\_\_\_ Job \_\_\_\_\_  
P.O.No. \_\_\_\_\_ Bumper Type \_\_\_\_\_  
Power and Control Arrangement \_\_\_\_\_ Date \_\_\_\_\_



**FRONT VIEW**

## DDL Equipment Pty Ltd

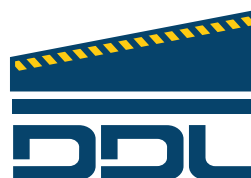
Reg No: 2005/043409/07

E-Mail: [sales@ddl.co.za](mailto:sales@ddl.co.za)

Website: [www.ddl.co.za](http://www.ddl.co.za)

Tel: 011 393 1209

Fax: 011 393 1169



TIME TESTED DOCKING

6 Neutron Road, Chloorkop, Kempton Park

**Ref: DSS.15**