

DOCK COMBO SHELTER SEAL - "600"

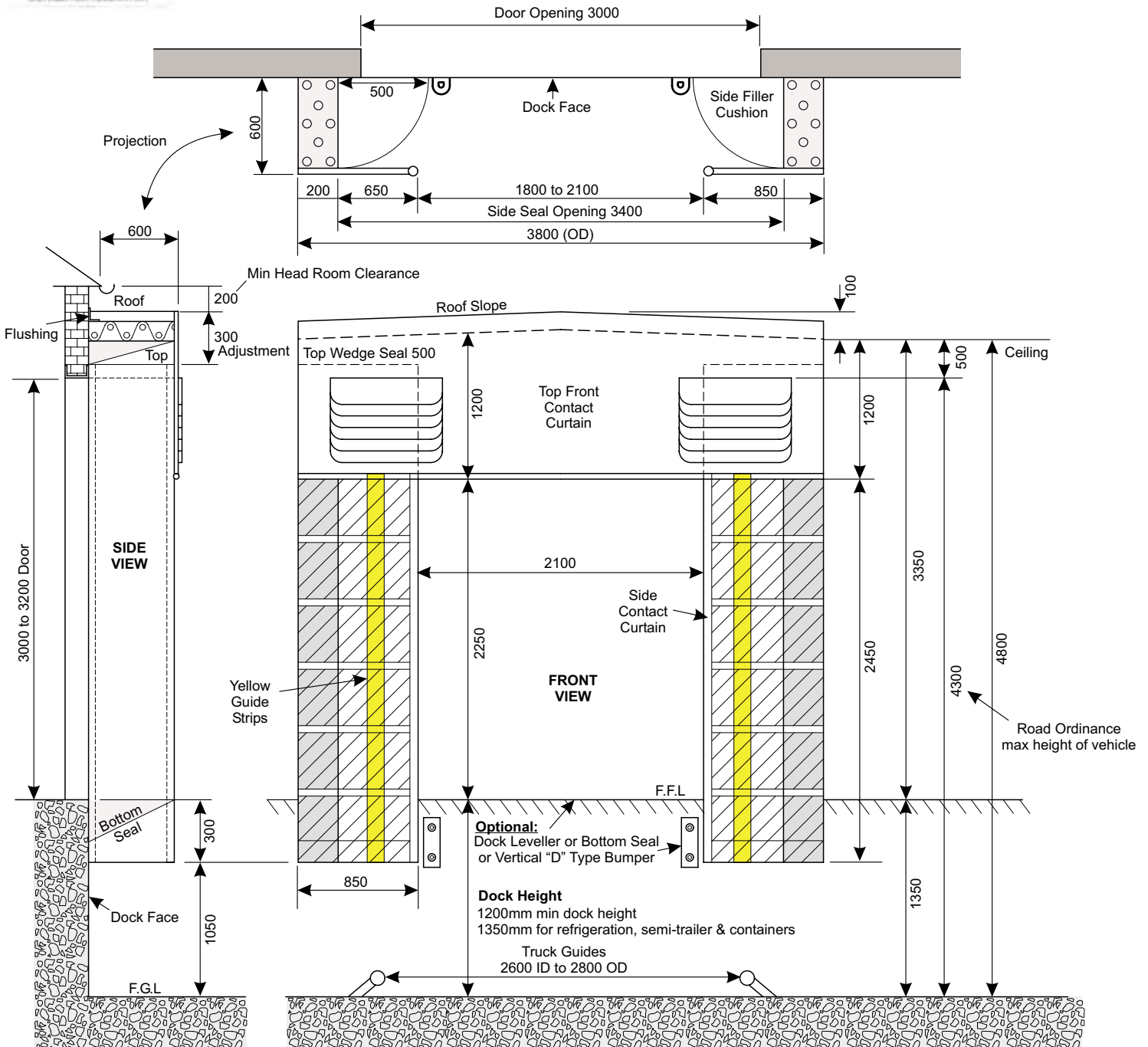
Technical Data

MODEL: DCSS 600

1. A combination of a Dock Cushion and Contact Curtain Seal with a top insulated panel header / roof to suit a door having an extra wide opening of 3m wide x 3m high.

- Colours: Olive Green
 Royal Blue
 Dark Grey
 Black

Customer	_____	
Model	Job	Order.No.
Bumper Type	_____	
Approved for Construction	Date	



2. Side Pads

The Combo Shelter Seal incorporates two insulated 200mm wide urethane side pads with a projection of 600mm, mounted on galvanized backing trays. The outside dimension is 3 800mm.

3. Roof

The combo sloping roof is 3 800mm in length x 600mm projection and 75mm thick insulated polyurethane iso-panel, mounted 4 800mm above ground level.

4. Front contact Curtain Seals Mk5

Having two (2) contact seals 750mm wide and 3 400mm high, with one top Contact Curtain Seal 3 600mm wide and 1 200mm drop, complete with foam edge, yellow guideline, wear strips and filler cushions - 600mm wide X 600mm projection length.

5. Note:

- A flat area 500mm around a 3m x 3m doorway opening flush with the dock face, must be provided - free of any obstruction i.e pipes, steel columns / bracing ledges, lights etc.
- The "Combo 600" Side Pad Seal forms the shelter protection, i.e. no extra building structure cost is required.



D.D.L. EQUIPMENT cc

P.O. Box 210, Strathavon, 2031

Tel : +27 11 443-4233

Fax : +27 11 882-4569

E-Mail : ddl@icon.co.za

Web Site : www.ddl.co.za

Cell : 083 653 3872

"The Bridge That Links The Total Materials Handling Systems Together"

Ref: DSS.34