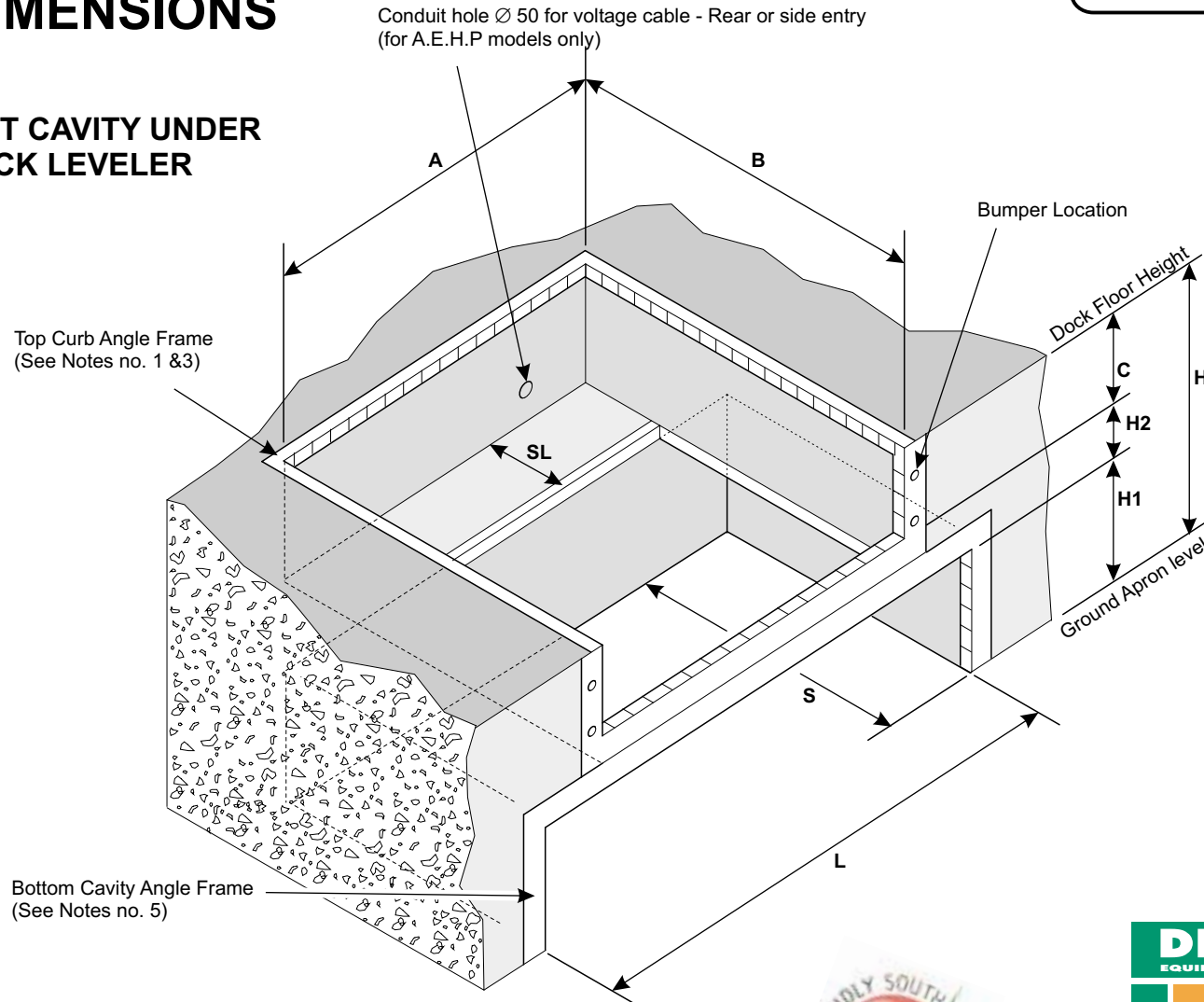


# DOCK LEVELER TAIL LIFT CAVITY

Customer \_\_\_\_\_  
 Model \_\_\_\_\_ Job \_\_\_\_\_ Order.No. \_\_\_\_\_  
 Power and Control Arrangement \_\_\_\_\_ Bumper Type \_\_\_\_\_  
 Approved for Construction \_\_\_\_\_ Date \_\_\_\_\_

## PIT DIMENSIONS

### TAIL LIFT CAVITY UNDER DOCK LEVELER



STD	Model	A	B	C
		Width	Length	Depth
	DL 18X30	* 1880mm	2820mm	445mm
	DL 21X30	2180mm	2820mm	445mm

\* Donates model for:  
**HHP** - Hand Hydraulic Pump  
**AEHP** - Automatic Electro Hydraulic Power Pack

- H = 1350mm, Loading Bay Height
- H1 = 705mm, Height of tail lift space
- H2 = 200mm, Channel depth
- L = 3000mm, Width of tail lift front space
- S = 2000mm, Depth length of tail lift cavity space
- SL = 820mm, Length of pit ledge

**NOTES:**

To be supplied by the contractor:

1. Top Curb Angle Frame - or DDL to supply
2. Curb Angle - Use min 80 x 80 x 6mm (Front 80x100x6mm)
3. Curb Angle fish tail - Centre distance 600mm max.
4. Pit must be clear and access be provided for installation.
5. Bottom cavity angle frame. (80x100x6mm or DDL to supply).
6. Spacer Bent Channel.

Ref: DE.43 TLC



**D.D.L. EQUIPMENT cc**  
 P.O. Box 210, Strathavon, 2031  
 Tel : +27 11 443-4233  
 Fax : +27 11 882-4569  
 E-Mail : [ddl@icon.co.za](mailto:ddl@icon.co.za)  
 Web Site: [www.ddl.co.za](http://www.ddl.co.za)  
 Cell : 083 653 3872

*"The Bridge That Links The Total Materials Handling Systems Together"*