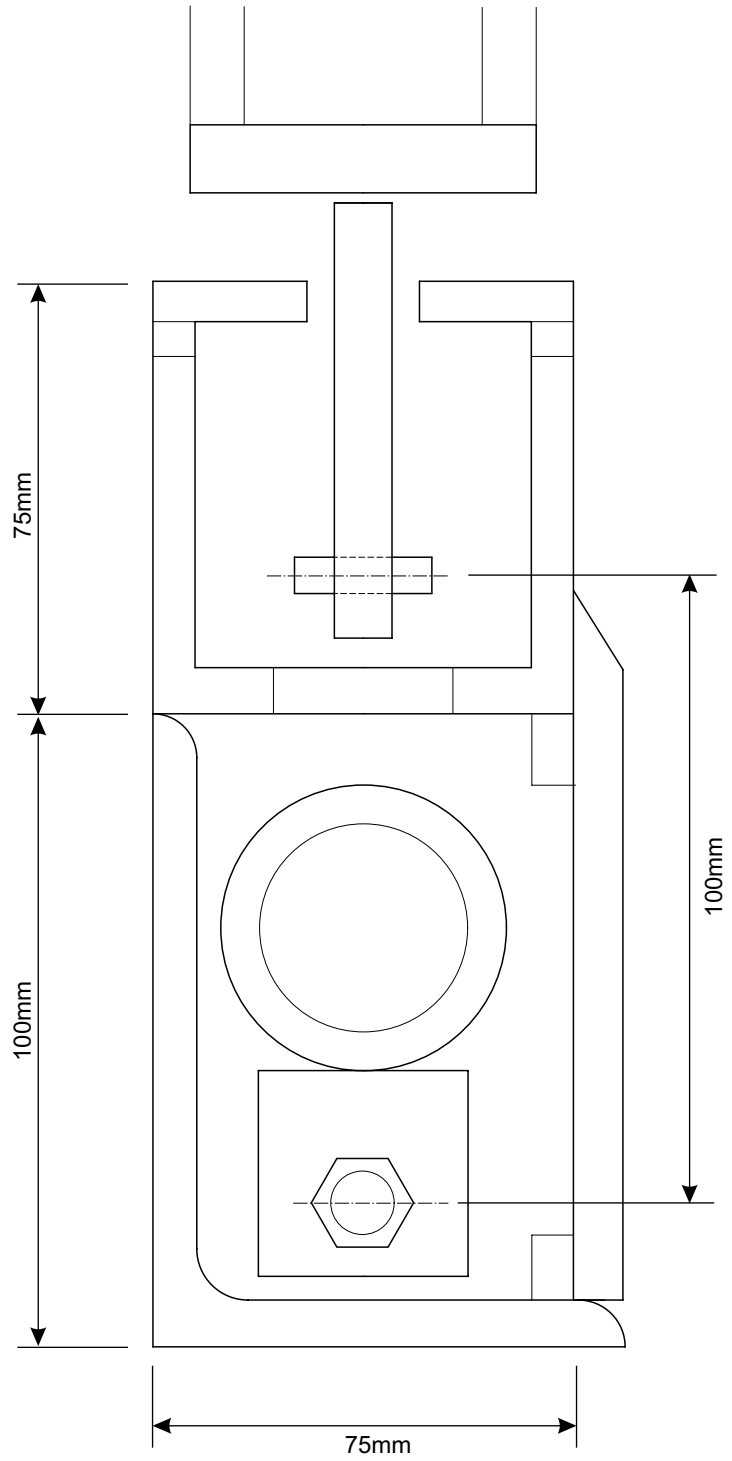


COLUMN MAST MODULAR UNIT

1½ - 2 TON COLUMN LIFT 75 mm x 75mm



D.D.L. EQUIPMENT cc
P.O. Box 210, Strathavon, 2031
Tel : +27 11 443-4233
Fax : +27 11 882-4569
E-Mail : ddl@icon.co.za
Web Site: www.ddl.co.za
Cell : 083 653 3872

"The Bridge That Links The Total Materials Handling Systems Together"

Ref: CL-26-SD