

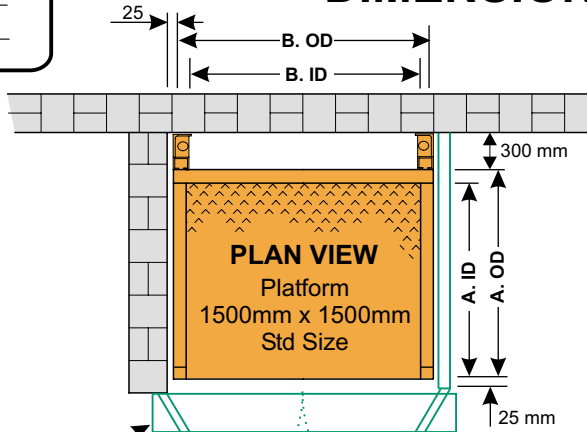
Technical Data

Customer _____ Installed at _____
 Model _____ Job _____
 Order.No. _____ Electrical Supply _____
 Approved for Manufacture _____ Date _____

ELEVATING GOODS LIFT

DIMENSIONS

Model	CL10GL	CL15GL	3.0	3.5	4.5
Capacity kg	1000	1500			
Lift Range Floor to Floor			3000 mm	3500 mm	4500 mm
Platform Size Length "A"	ID 1500 OD 1620	ID 1500 OD 1620			
Width "B"	ID 1500 OD 1620	ID 1500 OD 1620			
Well "A" Long Size "B" Wide	1800mm 1700mm	1800mm 1700mm			
Lift Speeds 1,5 kw 2.6 cc	20 SPM	30SPM	Power Pack V 380-3-50		



CONTROL
 Continuous pressure push button control for upper and lower floor with platform override switch.

OPTIONAL: SAFETY CAGES:
 Enclosed with solid or mesh steel panels 2200 mm high, "A" = length, "B" = width of platform.

APPROACH RAMP:
 75 mm high x 1000 mm long x 1500 mm wide.

SAFETY LOCKS:
 For cage gates interlocking electr/mech locks.

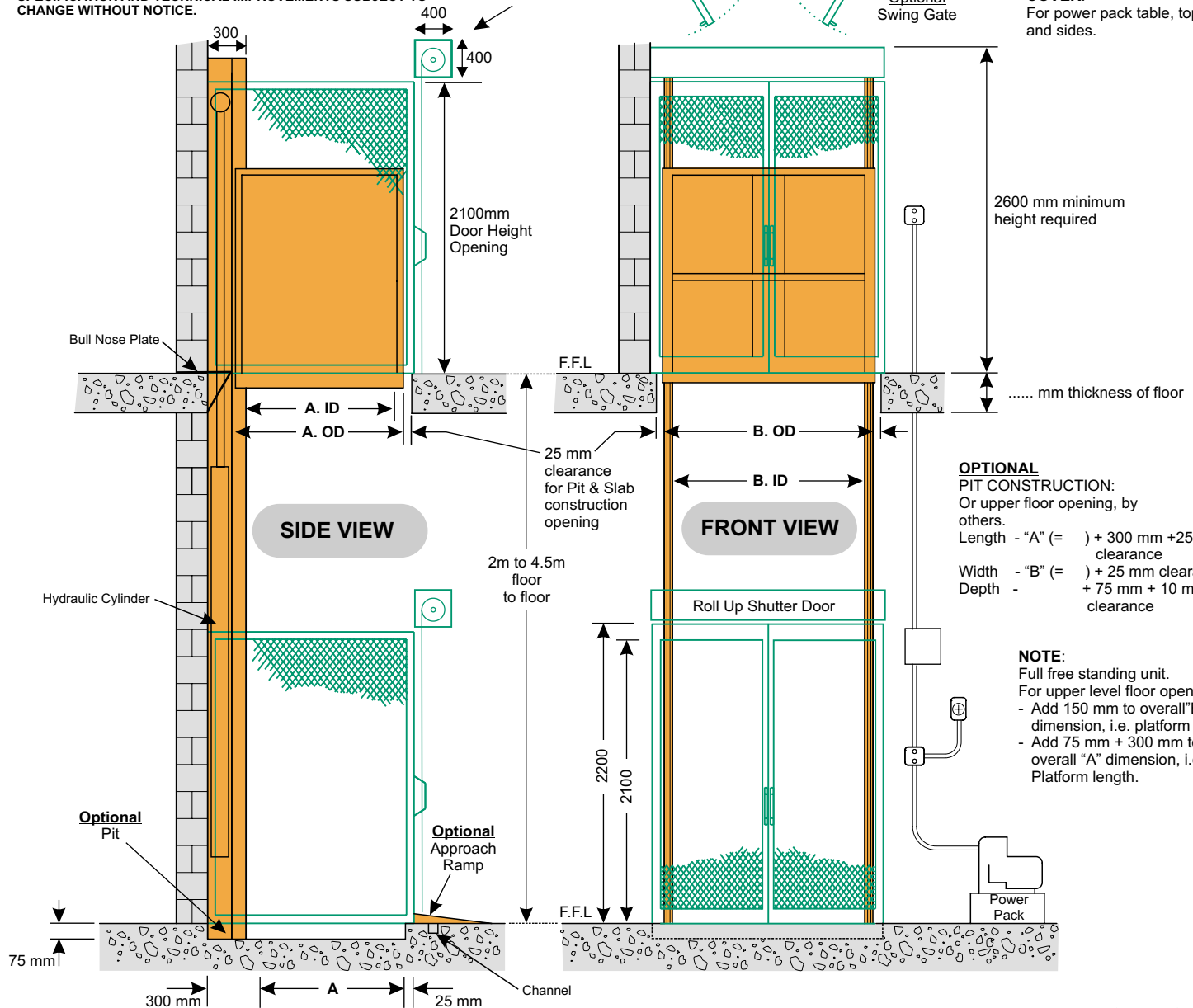
COVER:
 For power pack table, top and sides.

SPM = Seconds per Metre

SPECIFICATION AND TECHNICAL IMPROVEMENTS SUBJECT TO CHANGE WITHOUT NOTICE.

Optional Roll Up Shutter Door

Optional Swing Gate



OPTIONAL PIT CONSTRUCTION:
 Or upper floor opening, by others.
 Length - "A" (=) + 300 mm + 25 mm clearance
 Width - "B" (=) + 25 mm clearance
 Depth - + 75 mm + 10 mm clearance

NOTE:
 Full free standing unit.
 For upper level floor opening.
 - Add 150 mm to overall "B" dimension, i.e. platform width.
 - Add 75 mm + 300 mm to overall "A" dimension, i.e. Platform length.

ELEVATING GOODS LIFT

- As an economical and safe means of transporting good from one floor level to another in industrial applications.
- Provides the safest and most efficient means of vertical conveying of goods.
- Allows unused space to be recaptured or fully utilized in many buildings.
- Manufactured as a free standing or, self-supporting structure. This allows for the CL150GL to be installed independent of structural supports.
- Eliminates potentially costly architectural modifications and alterations to the building.
- The CL150GL enables it to be factory shipped fully assembled and pre-wired electrical circuit.
- Should future mezzanine usage or material flow patterns change, the CL150GL can be easily moved as a "one-piece" unit, thereby adding to its versatility.
- Has a lowered platform of 75 mm. This eliminates expensive pre-installation costs for pits, footings and pit drainage.
- The CL150GL can be situated on ground level and supplied with an entry ramp or recessed 75 mm into the floor slab for totally level access.
- Where access is restricted the CL150GL can be shipped in four major sections allowing site assembly to be completed in far less time than required for conventional "built up" units.
- Rugged platform understructures includes full width platform support backplate. Displacement type hydraulic system is fully "above ground" allowing easy access to all components for service and inspection.



D.D.L. EQUIPMENT (PTY) LTD



P.O. Box 210, Strathavon, 2031
 Tel : +27 11 443-4233
 Fax : +27 11 882-4569
 E-Mail : ddl@icon.co.za
 Web Site : www.ddl.co.za
 Cell : 083 653 3872

"The Bridge That Links The Total Materials Handling Systems Together"

Ref: CL-2-GL